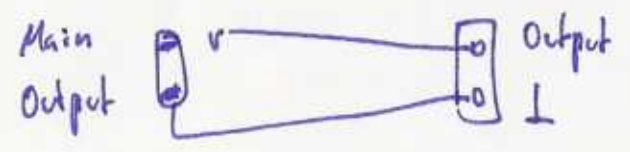
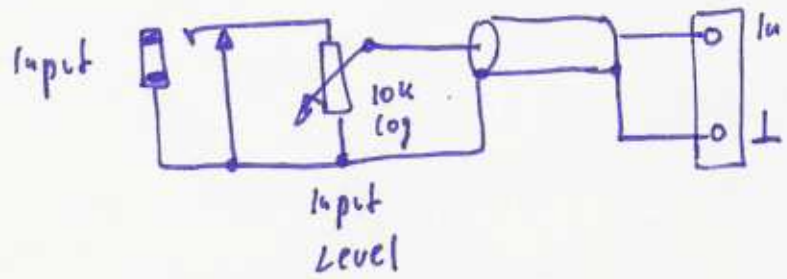


JH. 20-pole Phaser

© 2007 J. Haible

Input / Output connection (Minimal Version)



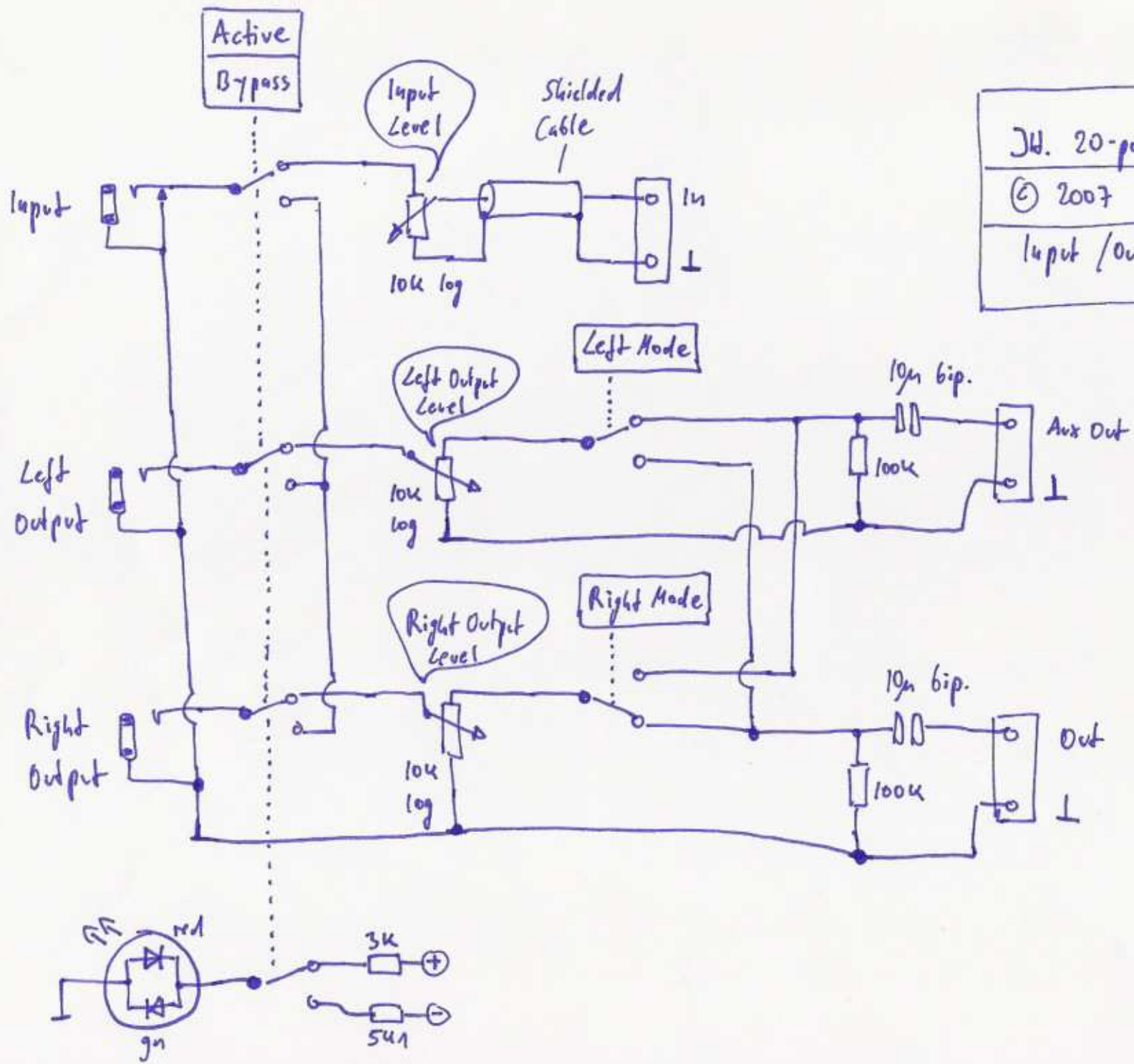
JH. 20-pole Phaser

---

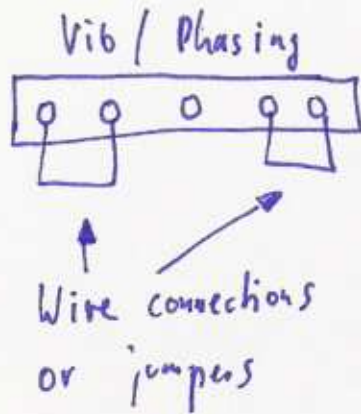
© 2007 J. Haible

---

Input / Output connection (Basic Version)

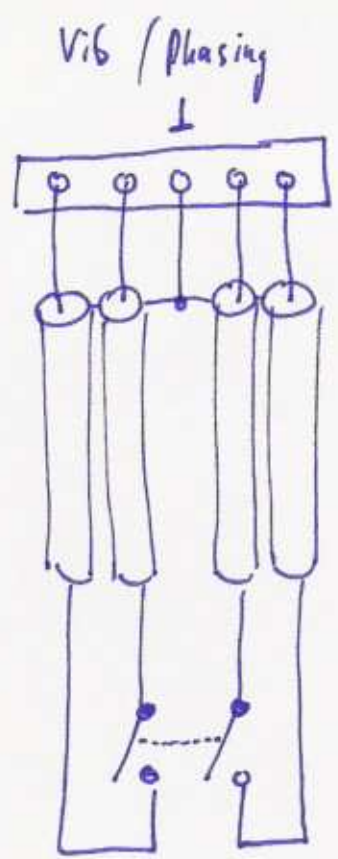


JH. 20-pole Phaser
© 2007 J. Haible
Input / Output connection (Deluxe Version)



Hard wired for Phasing

JH. 20-pole Phaser
© 2007 J. Haible
Options for Vibrato/Phasing

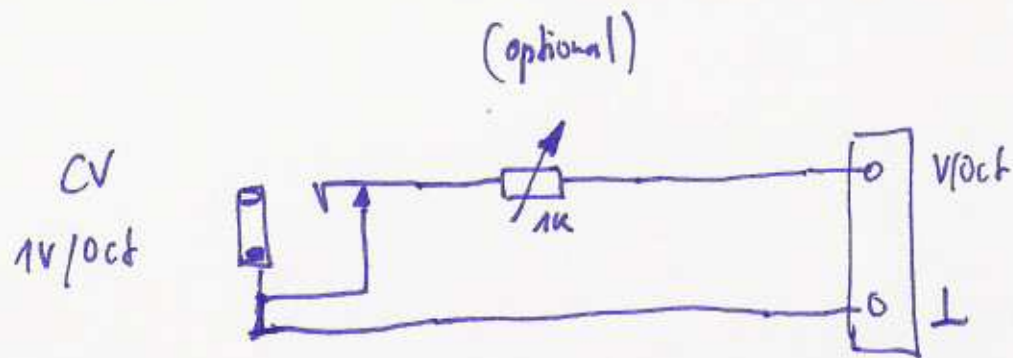


for short distance, unshielded wire is possible

Vibrato (open)
Phasing (closed)

With Vibrato / Phasing Switch





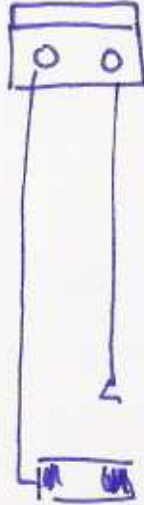
1V/oct Scale fine tuning Pot on front panel (optional).

There is a multi-turn-trimmer on the PCB which sets the 1V/oct sensitivity.

The front panel Scale fine tuning Pot is additional / optional.

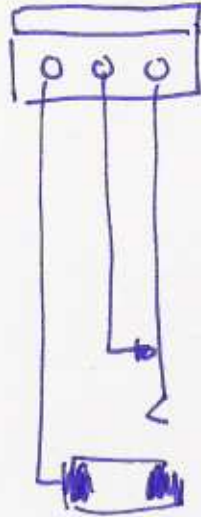
JH. 20-pole Phaser
© 2007 J. Hsible
V/oct Input

Mod Out



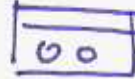
Modulation  
Output

Mod In

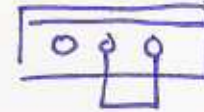


Modulation  
Input

Mod Out



Mod In



Jumper or  
Wire connection

if unused

J.H. 20-pole Phaser

© 2007 J.H.able

Modulation CV connectors