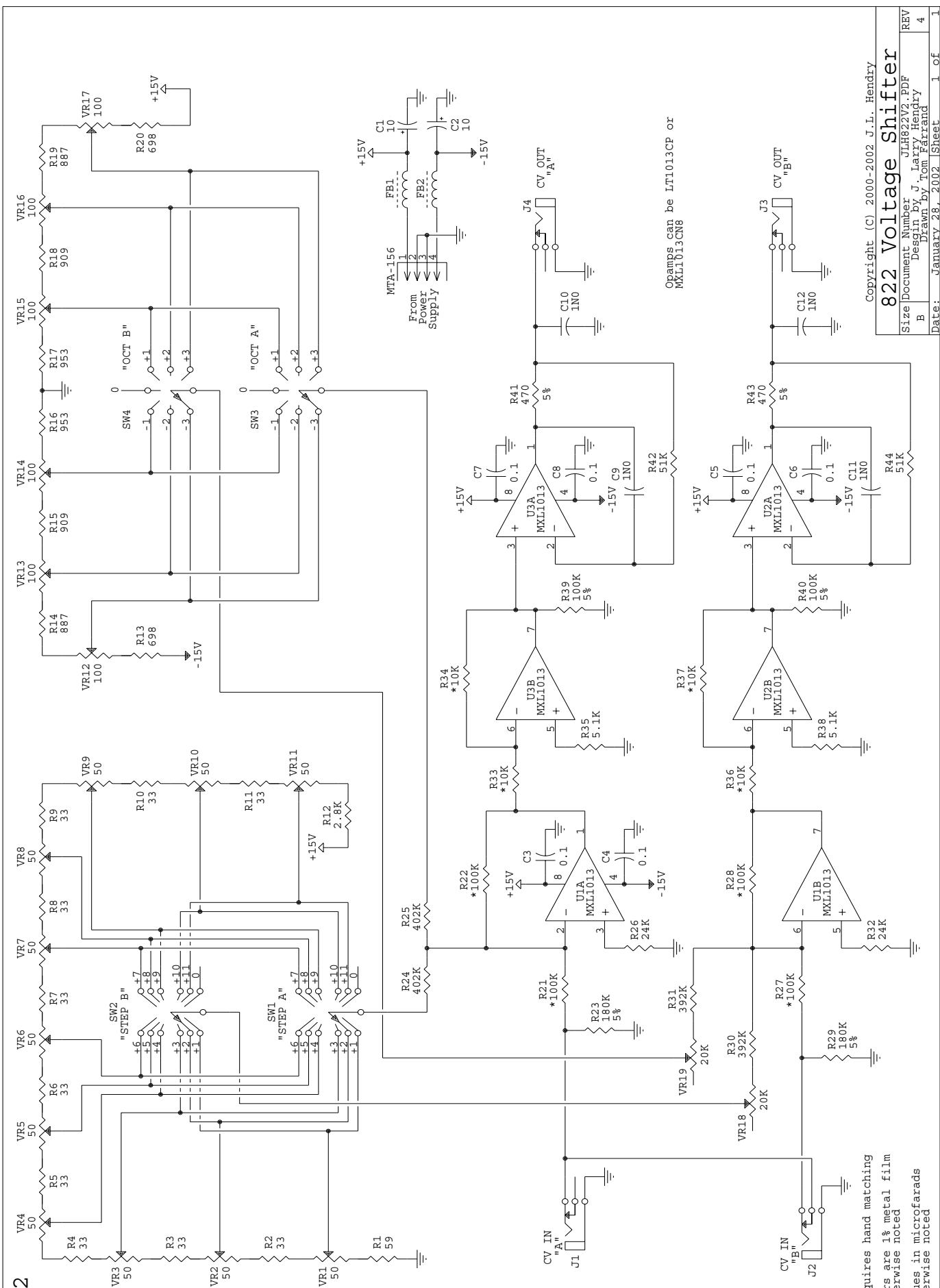


JLH-822

Version 2



* = Part requires hand matching
 All resistors are 1% metal film
 unless otherwise noted
 All cap values in microfarads
 unless otherwise noted

Copyright (C) 2000-2002 J.L. Hendry

822 Voltage Shifter

Size	Document Number	JLH822V2.PDF
B	Design by	J. Larry Hendry
	Drawn by	Tommy Strand
Date:	January 28, 2002	Sheet 1 of 1